

El Campanil Theatre

Quick Specs & Reference Measurements

SEATING CAPACITY	700
PROSCENIUM OPENING	29' 6" wide 19' at highest point 18' at lowest point
STAGE DEPTH	22' 9" plaster line to back wall 22' plaster line to furthest forward point of apron
STAGE WIDTH	69' stage right wall to stage left wall 55' 8" widest part of apron
STAGE HEIGHT	23' batten trim height 48' grid height Dead-hung grid
STAGE DECK	MDF, not sprung
CROSSOVER	Downstairs under stage (If available, please check on planning sheet)
LOADING DOOR	At stage level on east side of building on G street
STAGE ACCESS	Directly from street through loading door
STAGE DOOR	Located on east side of building near loading door
DRESSING ROOMS	Located beneath stage

Full Specifications and Equipment List

AUDIO

FOH

Console:

Crest Audio X8HS 40 channel, 8 bus, 8 aux sends, 4 matrix

Mains:

(3) Meyer Sound UPM-2 (for orchestra fill)*

(6) Meyer Sound MSL-3A (3 per side, flown), bi-amped*

(6) Meyer Sound 650-R2 Subwoofers (3 per side, under stage)*

Drive:

(8) Crest Audio PRO 4801 amplifier (main array/fill)

(2) Crest Audio PRO 7001 amplifier (subs)

Processing/FX:

(1) Klark Teknik DN-360 stereo graphic EQ

(1) DBX 231 stereo graphic EQ

(1) Roland SDE 1000 digital delay

(2) Yamaha REV500 digital reverb

(1) Yamaha SPX900 multi-effect processor

(1) T.C. Electronic M-One multi-effect processor

(8) Channels Drawmer noise gate

(8) Channels Drawmer compressor

(1) Denon CD Player

(1) American Audio DCD-PRO310 dual deck CD player

MONITOR WORLD

Console:

Ramsa S840 series 40 channel, 8 bus, 8 aux sends, 8 matrix

Monitors:

(10) Meyer Sound UM-1C, bi-amped*

Drive:

(6) Crest Audio PRO 7200 amplifier

(1) Crest Audio PRO 4801 amplifier (for cue mix)

Processing/FX:

(2) DBX 231 stereo graphic EQ

(1) Klark Teknik DN-360 stereo graphic EQ

MICROPHONES, CABLES, & MISCELLANEOUS

Xlr cable:

(5) 5'

(2) 10'

(1) 15'

(38) 25'

(8) 50'

(3) 100'

(2) 200'

El Campanil Theatre

MICROPHONES, CABLES, & MISCELLANEOUS (cont.)

Speakon (monitor) cable:

- (1) 10'
- (4) 15'
- (1) 20'
- (5) 25'
- (3) 50'

¼" unbalanced cable:

- (4) 20'

Snakes:

- (2) 50' 12 channel xlr sub-snake
- (1) 100' 16x4 channel xlr sub-snake, ¼" balanced returns

Wired microphones:

- (4) EV-408
- (4) Sennheiser 421
- (1) Shure Beta 52
- (1) Shure Beta 87A
- (8) Shure SM57
- (6) Shure SM58

Wireless microphones:

- (1) Shure ULXP4 receiver
- (1) ULX2 handheld transmitter with Beta 87A capsule
- (2) Sony WRR-840 receiver
- (2) Sony WRT-810A handheld mic
- (2) Sony WRT-820 body pack with ECM-66 lavalier

Miscellaneous:

- (6) Countryman type 85 FET DI boxes

*All Meyer Sound speakers are equipped with the appropriate proprietary crossover/signal processor.

El Campanil Theatre

STAGING

- (2) 4'x8'x18" riser
- (60) black folding chair
- (5) music stand
- (1) 6 section plexiglass drum shield

El Campanil Theatre

LIGHTING & VIDEO

DIMMING, CONTROL, & ACCESSORIES

Console:

ETC Ion w/2 20x2 universal fader wings

Dimming:

- (1) ETC Sensor+ SR48 rack w/CEM+ controller
- (48) ETC D20 dual 2.4kw dimmer module (96 dimmers)

Accessories:

- (1) ETC Net3 Radio Focus Remote
- (2) ETC Net3 Four Port Gateway

INSTRUMENTS & ACCESSORIES

Ellipsoidal:

- (4) ETC Source Four 19°
- (12) ETC Source Four 26°
- (3) ETC Source Four 36°
- (4) ETC Source Four 50°
- (2) ETC Source Four Zoom 25–50°

PAR:

- (20) ETC Source Four PAR EA, each w/VNSP, NSP, MFL, & WFL lenses
- (19) PAR 64 NFL, silver
- (36) PAR 64 MFL, silver

Fresnel:

- (6) ETC Source Four PARnel

Cyc (all w/color frames):

- (2) Colortran Farcyc 3–window
- (3) Colortran Farcyc 1–window
- (1) Colortran Sky cyc 3–window

Intelligent:

- (2) Martin MAC 500E

Accessories:

- (2) 19° barrel for ETC Source Four
- (1) 50° barrel for ETC Source Four
- (2) Rosco I–Cue intelligent mirror
- (2) Drop–in iris for ETC Source Four
- (18) 8" barn door, 4–way
- (10) Size A pattern holder for ETC Source Four
- (29) Size B pattern holder for ETC Source Four
- (2) Size B glass pattern holder for ETC Source Four
- (33) 6" color frame for ETC Source Four
- (28) 8" color frame for ETC Source Four PAR, PARnel, & Zoom
- (60) 10" color frame for PAR 64
- (6) Extra safety cable

El Campanil Theatre

INSTRUMENTS & ACCESSORIES (cont.)

Cable & adaptors:

- (2) 200' DMX
- (1) 10' scroller (4-pin xlr)
- (1) 3' 3-pin female to 5-pin male xlr
- (1) 15' 3-pin male to 5-pin female xlr
- (1) 5-pin DMX terminator
- (11) 5' stage pin
- (9) 10' stage pin
- (5) 15' stage pin
- (1) 25' stage pin
- (1) 100' stage pin
- (5) 3' stage pin molded twofer
- (1) 1' male stage pin to female stage pin/female Edison
- (3) 2' male stage pin to female Edison
- (1) 20' male stage pin to quad Edison
- (2) 15' male Edison to female stage pin
- (1) 5' male stage pin to female IEC 320

VIDEO

Projector:

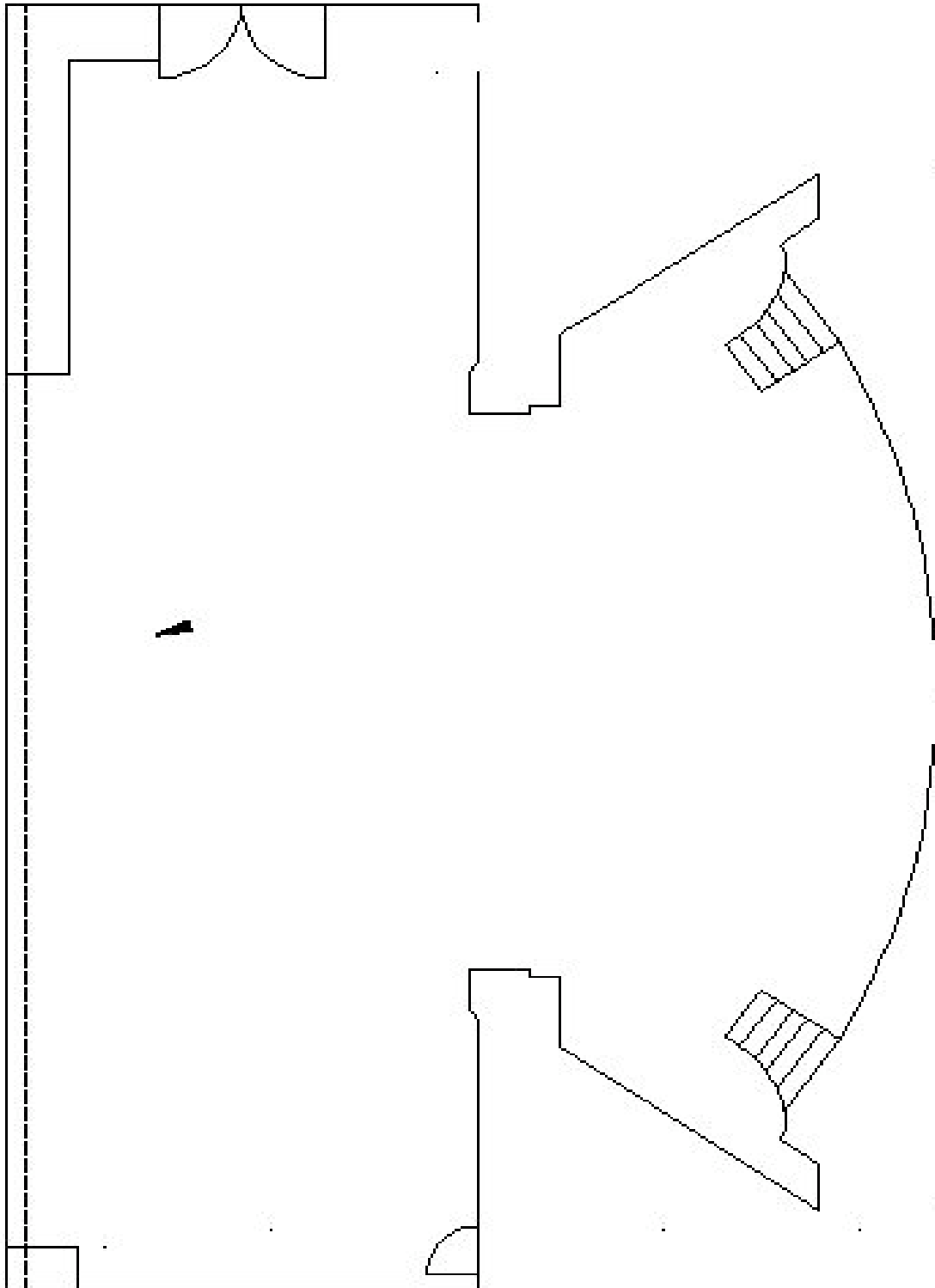
Barco BD8100LC with wired remote controller

Screen:

25' x 14' (motor-operated, perforated)

El Campanil Theatre

Stage Diagram



El Campanil Theatre

Contact Information

BOX OFFICE

Phone:

(925) 757-9500

Fax:

(925) 757-9501

Web:

<http://www.elcampaniltheatre.com>

STAFF

Theatre Manager: Rick Carraher

Phone: (925) 757-1366

Fax: (925) 757-9501

E-mail: elcampaniltheatre@comcast.net

Box Office Manager: Deanna Greensides

Phone: (925) 757-9500

Fax: (925) 757-9501

E-mail: deannagreensides@comcast.net

Technical Director: Johnny Hackenkamp

Phone: (925) 783-4027

Fax: (925) 757-9501

E-mail: johnnyhackenkamp@gmail.com